

SUPPORT NETWORK

Experience Our Mobile Service Van For Fast And Reliable Solutions



ADDRESS:

North Zone

ESCORTS LTD. - CONSTRUCTION EQUIPMENT
4th Floor 409, Jasola Vihar,
Elegance Tower, Near Apollo Metro Station,
New Delhi - 110019

East Zone

ESCORTS LTD. - CONSTRUCTION EQUIPMENT
Eco Centre, Ambuja Neotia,
609, 6th Floor, EM Block,
Salt Lake Sector-V, Kolkata – 700091

West Zone

ESCORTS LTD. - CONSTRUCTION EQUIPMENT UNIT 1,
3rd Floor, A-Wing, Times Sqaure,
Andheri - Kurla Road, Opp. Mittal Industrial Estate,
Andheri (East), Mumbai 400059 (Maharashtra)

South Zone

ESCORTS LTD. - CONSTRUCTION EQUIPMENT
1st Floor, Bearing No - FF 2, in Subham Square,
Survey Number 41/9, 1st Main Road and 1st Street,
Tarambakkam, Porur,
Chennai - 600116

MKT/21.1/F/1621

WHEN YOU NEED EXTRA

F 1621



4WD as Standard Feature | Hydraulic Clutch | Creep Speed: 1.3 Kmph
Equipment Monitoring System | Auto Levelling Hook Block



Customer Support No.:
1800 180 4488

(Timings: 9.30 am - 6.00 pm, Monday to Friday)

E-mail:
ece.marketing@escorts.co.in

Escorts Construction Equipment: Plot No. 219, Sector-58, Ballabhgarh- 121004, Faridabad, Haryana (INDIA) Tel.: 0129-2306574/2306598/2306571
Fax: 0129-2306572 Website: www.escortsgroup.com

ESCORTS WHITE LINE

F 1621



ESCORTS  **WHITE LINE**



SPECIFICATIONS



RATED CAPACITY

16 Tonne at	1.5 m radius
920 kg at	15.8 m radius
Max Hook Height	18.2 m
SWL based on 85% stability and strength (IS 4573)	



ENGINE (BS IV)

Volvo - Eicher make CEV BS IV Diesel Engine, Model E494TCI - High Pressure Common Rail System (HPCR) Technology, Turbo Charged Water Cooled, ECU Control Engine Management System, Developing 74 Kw/101HP @ 2200 RPM or Equivalent Engine.



TRANSMISSION & CLUTCH

Engine is coupled with Synchromesh Transmission Gear Box and Auxiliary Gear Box with high/low & 2WD/4WD mode selector
Clutch

Single, dry type friction clutch plate (self adjusting)
10 forward and 2 reverse
Max Travel Speed
41 Kmph
Creep Speed
1.3 Kmph
Gradeability
40% unladen



STEERING

Fully power orbitrol with twin hydraulic double acting rams
Type Articulated power steering, through steering wheel.

Articulation	Up to 40° on either side
Turning Radius	7.2 m



CONTROL VALVE

6 spool double acting with a built-in relief and auxiliary valves



AXLES

Front	Rigidly Mounted
Rear	Mounted with two semi-elliptical springs

STRUCTURE

Frames and boom are fabricated with high tensile steel plates, sections and with proven technology.

OPERATOR'S CAB & CONTROLS

"Operator cabin with steel construction, excellent visibility for craning operation, adjustable seat, automotive type controls like steering wheel, brakes, accelerator pedal, gear shifting etc.
Dashboard panel has electronic speedometer, hours meter, engine oil pressure gauge, engine coolant temperature gauge, AGB oil temperature gauge, parking brake indicator, directional indicator etc."

NOTE Technical modification reserved. All dimensions & weights are variable within $\pm 5\%$ over indicated values.



BRAKES

Service	Fully air operated 'S' cam dual circuit brakes on front & rear axles
Parking	Air operated, spring actuated fail safe brakes on rear axle



TYRES

Front	11 x 20 - 16 PR [4 Nos.]
Rear	11 x 20 - 16 PR [4 Nos.]



BOOM

4 Parts Slotted Boom with 3 parts hydraulically powered & fully synchronized, 4th part power extended and manually pinned for safety
Luffing Range

-10° to + 65°



HOIST MECHANISM

Hydraulically operated with 4 falls built in safety brakes.
Self-adjusting snatch block with 13 mm dia rope



ELECTRICAL SYSTEM

12 V, DC, Negative Earth
120 AH Batery for Longer Life



DIMENSIONS

Wheel Base	3950 mm
Overall Length	9725 mm
Overall Width	2450 mm
Overall Height	3215 mm
Front Wheel Track	1810 mm
Rear Wheel Track	1810 mm



OPERATING WEIGHT

Front Axle Weight	7080 Kg
Rear Axle Weight	9380 Kg
Total Weight	16460 Kg



CAPACITIES

Fuel Tank	220 ltrs.
Hydraulic tank	175 ltrs.



SAFETY SYSTEM

Safe Load Indicator with Hydraulic Cut off (Optional)
Safety brakes on Hoist (Standard)
Hose Protection failure Device (Standard)
Rope Compensating Snatch Block (Standard)
Equipment Monitoring System (Optional)
Rear View Camera with LCD (Standard)
Battery Cut off Switch



STANDARD ACCESSORIES

Operator Cabin
Mobile Charger
Concealed Lockable battery
Tyre Guard
Rear View Camera
Helper Seat Platform
Beacon Lamp
Safe Load Indicator

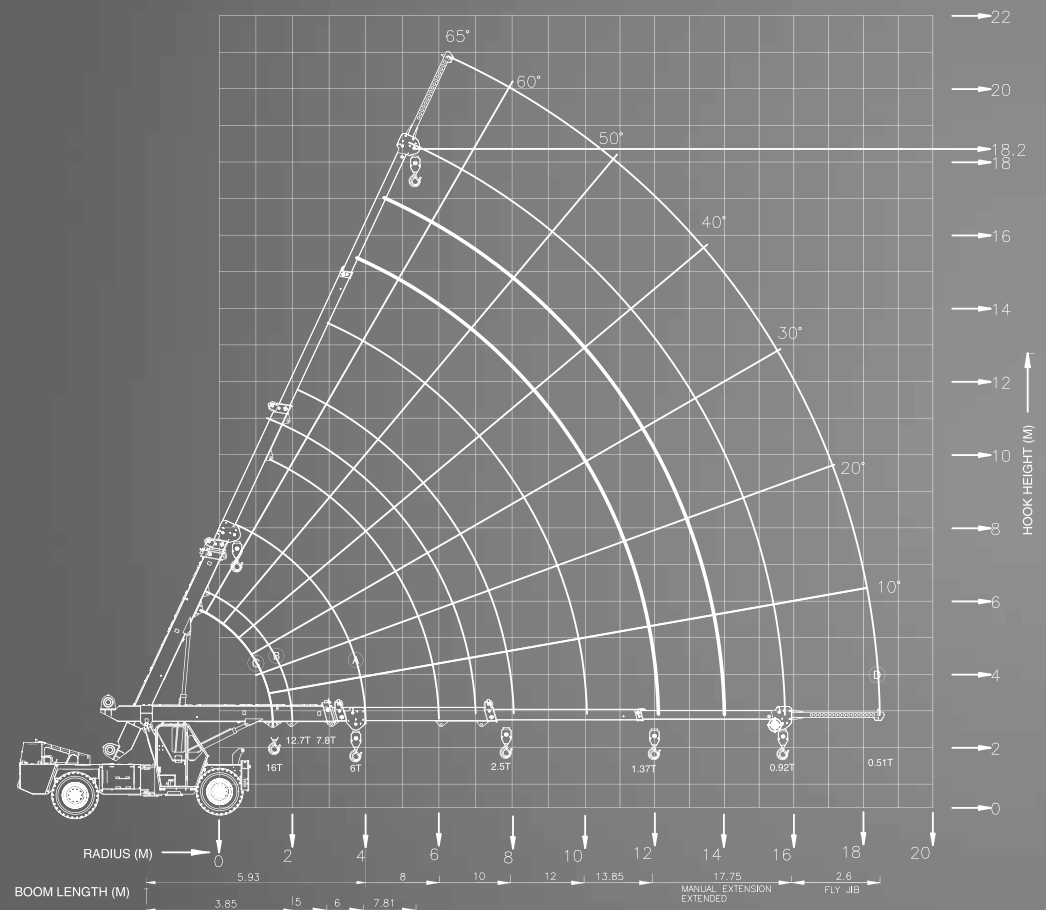


OPTIONAL ACCESSORIES

RHINO Hook
EMS
Fire Extinguisher
Drag Winch
Fly Jib

TECHNICALS

Load Chart



Features



HYDRAULIC CLUTCH

Low effort hydro pneumatic clutch to reduce operator fatigue.



ELECTRONIC ACCELERATOR PEDAL

Accelerator Pedal - Low effort electronic accelerator pedal reduce operator fatigue.



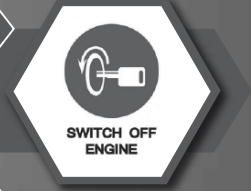
ECU EMS SYSTEM

ECU EMS – Electronic Control Unit for Engine Management System for Engine diagnosis and troubleshoot.

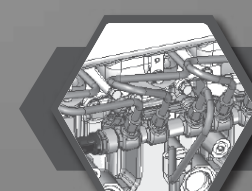


IGNITION ON/ OFF

Ignition key to switch off engine, no more use of stop cable to engine put off.



SWITCH OFF ENGINE



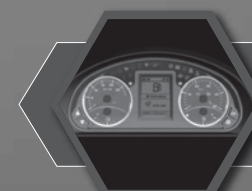
HPCR SYSTEM

HPCR – High Pressure Common Rail System - HPCR provide cleaner exhaust, deliver more horsepower and fuel efficiency per displacement.



ROCKER SWITCHES

Rocker Switch with more reliable and better aesthetic appearance, low operator fatigue.



CLUSTER

Single Digital Cluster with all gauges, fault code detection for engine system, date and time display feature, less number of wiring harness.